

Graphèmes employés :

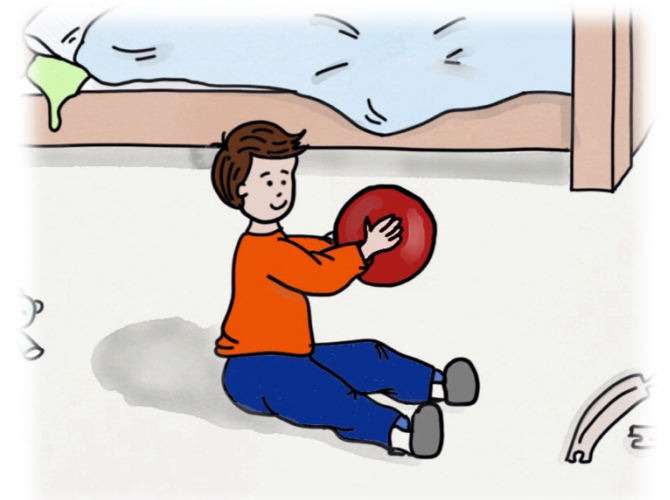
a, i, l, r, u, m, o, p, e, t, f, s, v, b

Mots-outils :

est, elle, une, de, sous

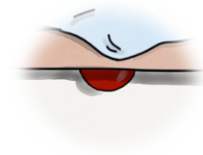


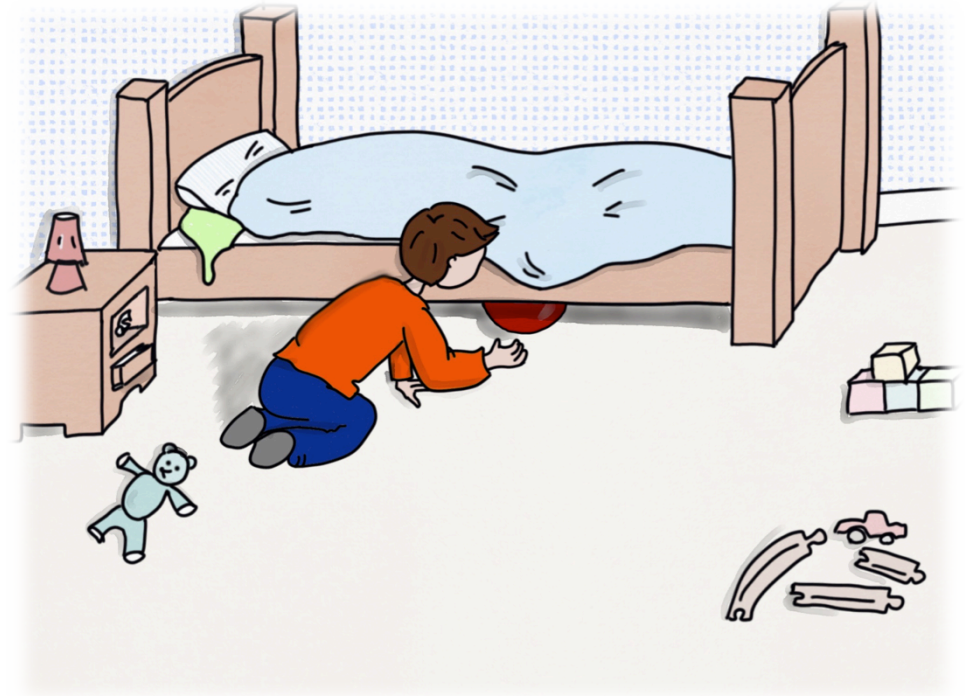
LA BALLE DE NOA



Marie GABRIEL

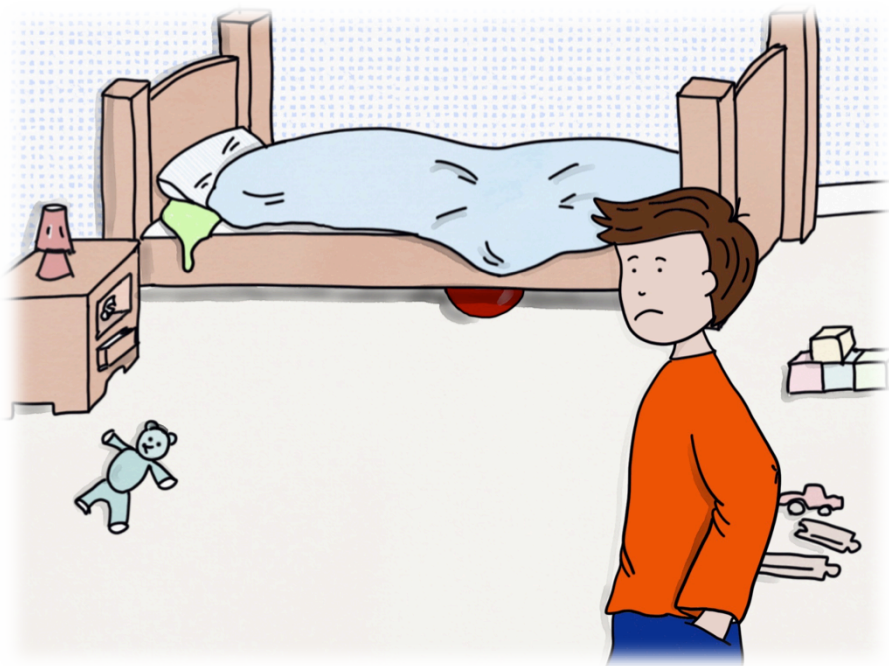
La balle de Noa



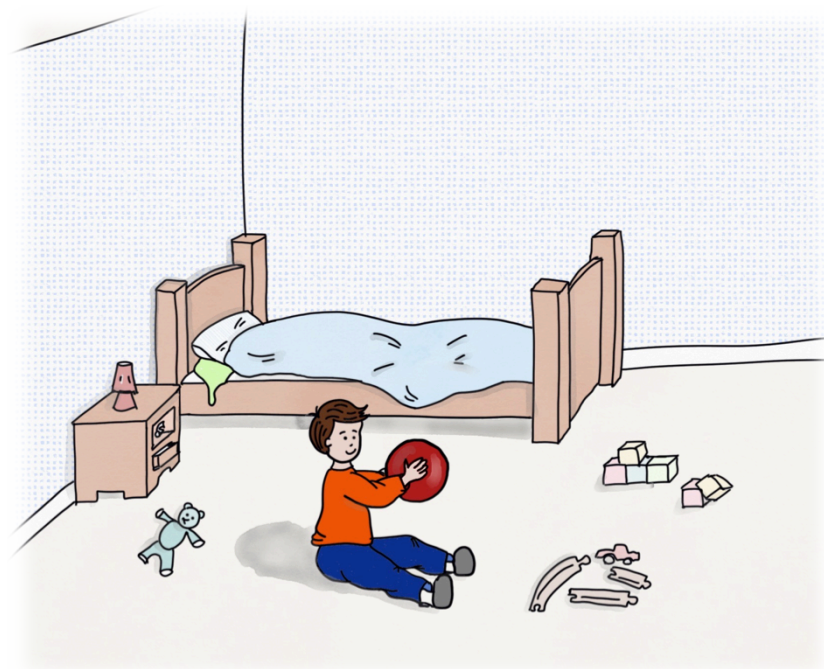


Il attrape sa balle.

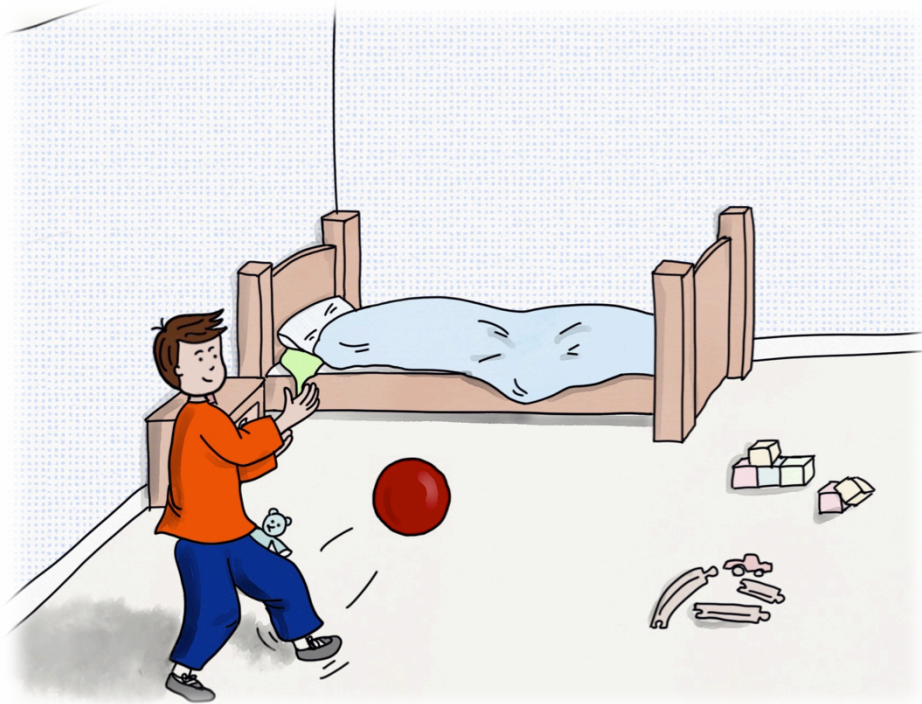
C'est dur !



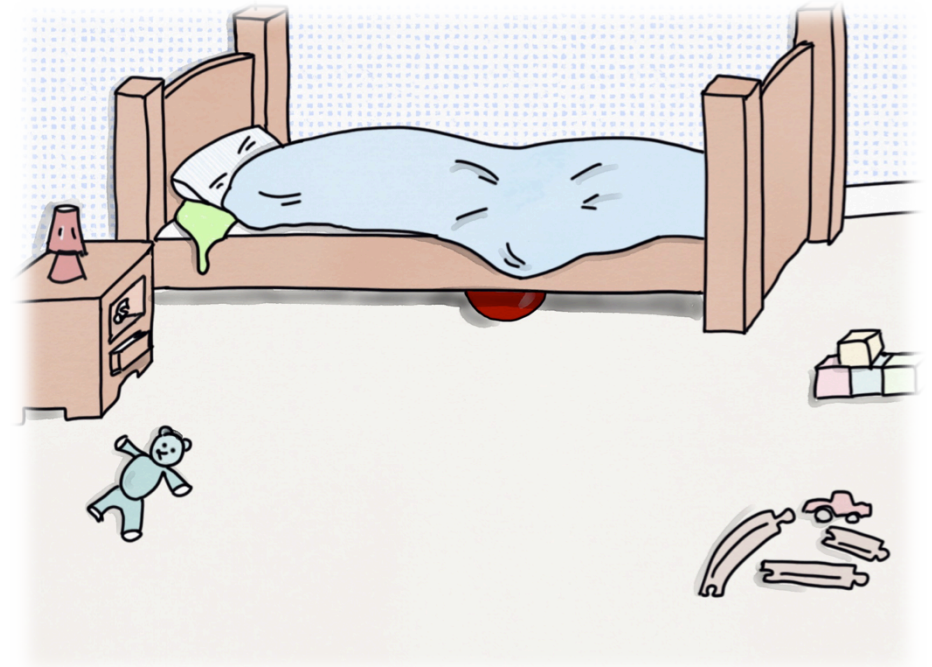
Noa est triste : il
n'a plus sa balle.



Noa a une balle.



Il tire.
La balle vole.



Elle file
sous le lit de Noa.